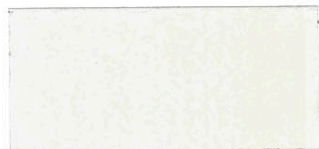




Standard ARMORTECH™ Coatings



Glacier White
SRI-85



Stone White
SRI-71



Ivory
SRI-68



Beige
SRI-43



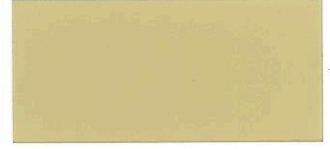
Light Stone
SRI-68



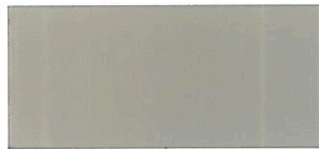
Sandstone
SRI-55



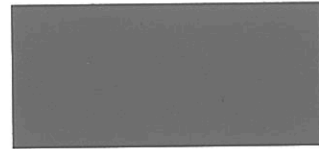
Hickory
SRI-48



Sand Gold
SRI-61



Ash Grey
SRI-58



Sterling Grey
SRI-43
formerly: Grey



Charcoal Grey
SRI-25
formerly: Charcoal



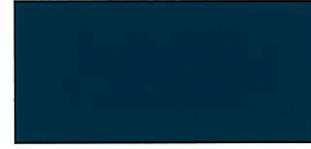
Tile Red
SRI-32
formerly: Red



Light Blue
SRI-34



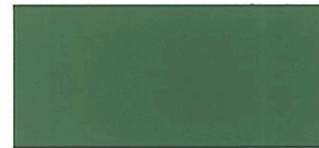
Tahoe Blue
SRI-25



Pacific Blue
SRI-25
formerly: Dark Blue



Light Green
SRI-47



Sage Green
SRI-31



Forest Green
SRI-32
formerly: Evergreen



Pine Green
SRI-29
formerly: Forest Green



Desert Brown
SRI-24



Cocoa Brown
SRI-27
formerly: Light Brown



Kodiak Brown
SRI-22
formerly: Brown



Weathered Copper
SRI-24



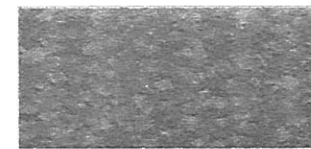
Black
SRI-24



Copper Penny
SRI-60



Zincalume®Plus/Galvalume®
SRI-65



Galvanized



Rusteeel™ (Cold-Rolled)
Rusteeel Plus™ (A606)

Oil canning is not a cause for material rejection. These printed chips provide a close representation of the colors. Metal samples are available upon request. See back for panel, gauge & color availability.

In partnership with:



PPG Coatings Protected



steelscape